

MONTHLY MEMBERSHIP PROGRESS REPORT

District 23 B

Results as of: 5/31/2020

GMT:

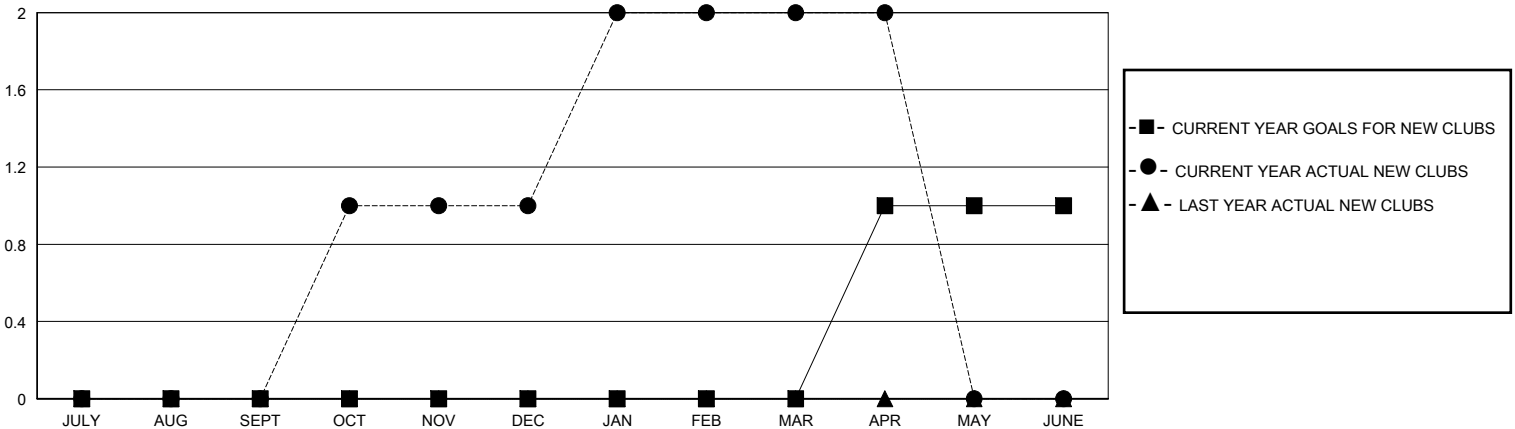
LOCATION CONNECTICUT

GMT CA

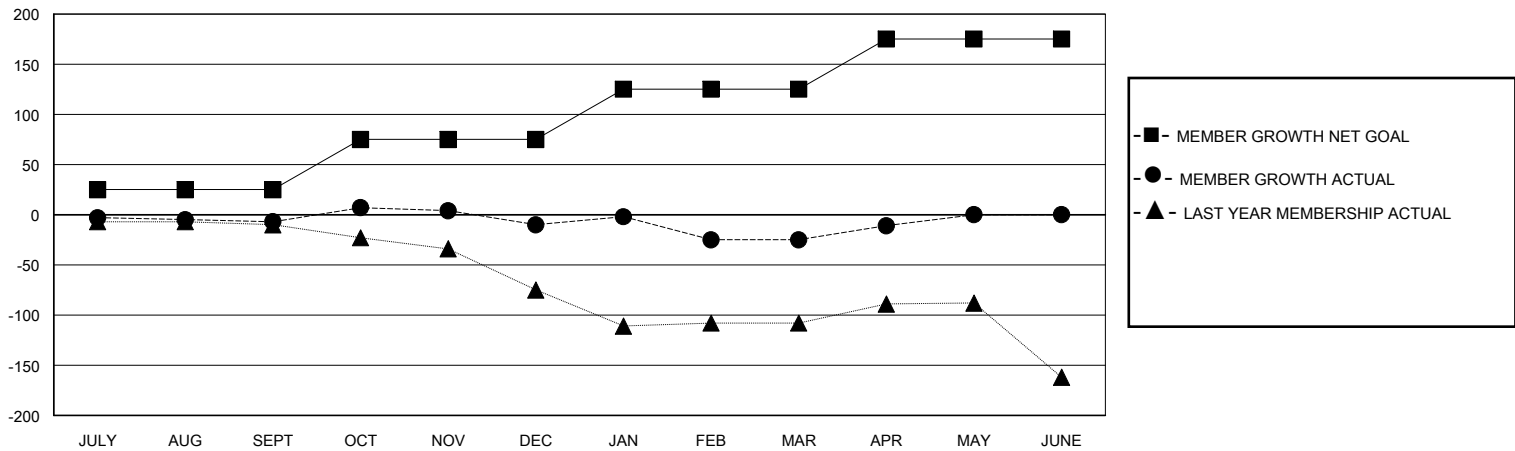
Clubs			
RESULTS FOR 2019-2020			
QUARTER	NEW CLUB GOAL	NEW CLUBS	DROPPED CLUBS
JULY/AUG/SEPT	0	0	0
OCT/NOV/DEC	0	1	1
JAN/FEB/MAR	0	1	1
APR/MAY/JUNE	1	0	0

Members			
RESULTS FOR 2019-2020			
QUARTER	MEMBER GROWTH NET GOAL	MEMBER GROWTH ACTUAL	DROPPED MEMBERS ACTUAL (including transfers)
JULY/AUG/SEPT	25	22	28
OCT/NOV/DEC	50	69	70
JAN/FEB/MAR	50	53	64
APR/MAY/JUNE	50	21	5

GOALS AND ACTUAL NEW CLUBS CUMULATIVE



GOALS AND ACTUAL MEMBERS CUMULATIVE



DROPPED CLUBS: 2	38 CLUBS OF 55 ADDED 1 OR MORE NEW MEMBERS	GENDER DISTRIBUTION	
		MALE 1,155 (66.57%)	FEMALE 580 (33.43%)
DROPPED MEMBERS		TOTAL FAMILY UNIT MEMBERS 356	
DECEASED 15	CLUB CANCELLED 8		
OTHER 144		FAMILY MEMBERS PAYING HALF DUES 187	
TOTAL 167		CLICK HERE FOR CUMULATIVE MEMBERSHIP DATA	